

2024 Utility & Street Reconstruction

N. Welhouse Drive & W. Curtin Avenue

Village of Kimberly - Outagamie County Wisconsin

Brad Werner PE | McMahon

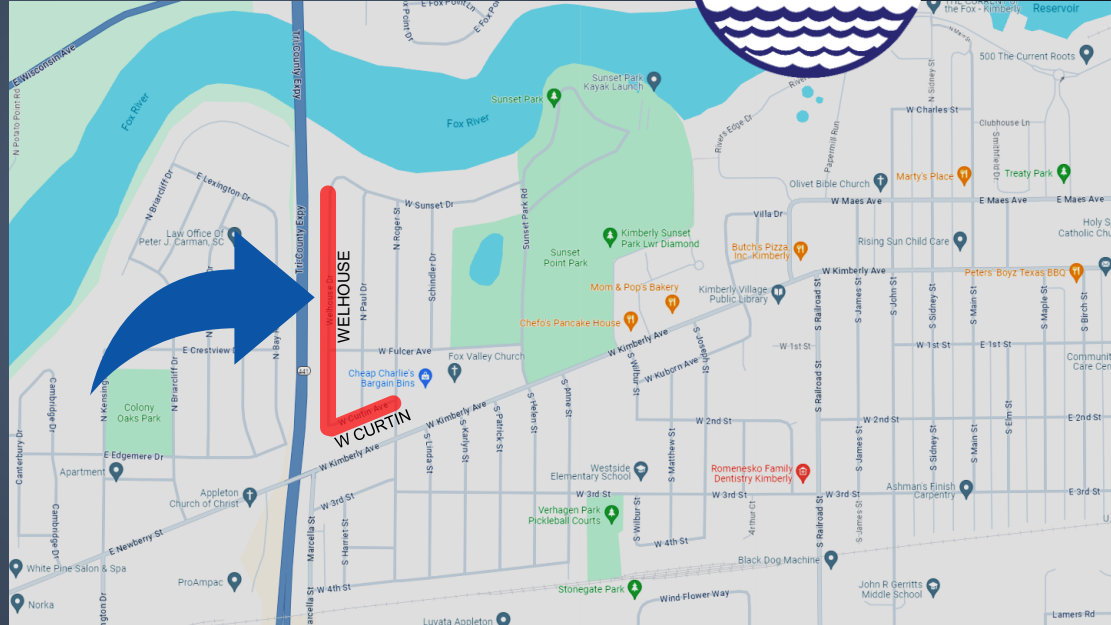
FEBRUARY 27, 2024



McMAHON
ENGINEERS ARCHITECTS

Project Scope

- Utility Reconstruction
mid-April to July 3
- Street Reconstruction
July 8 to September 6

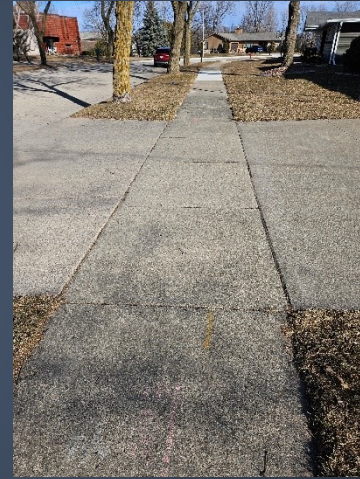


Utility Reconstruction Project Scope

- Terrace Tree Removal
- Sanitary Sewer Mainline
- Sanitary Laterals into the Home
- Watermain Reconstruction
- Water Services with New Curb Stop behind Sidewalk
- Storm Sewer
- Storm Laterals to Unserved Homes for Sump Pump Discharge
- Mailbox Removal

Street Reconstruction Project Scope

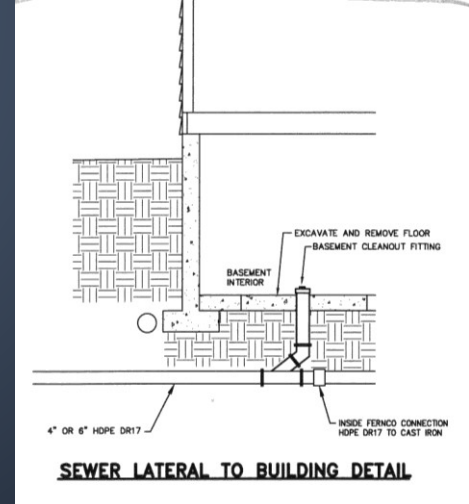
- Full Replacement of the Concrete Street
- Replacement of Concrete Apron
 - Private Driveway Work at Property Owner Request and Expense
- Replacement of Sidewalk thru the Driveway
- Green DOT Sidewalk Replacement Program
- Tree Stump Removal
- Full Terrace Restoration
- Mailbox Re-Installation



Project Assessments

■ Sanitary Sewer Lateral

- Laterals that are not plastic are required to be replaced
- Lateral replacement construction protocol
- Lateral work in R/W
 - 2023 Final Assessment = \$3,463.20
- Private Lateral Work
 - Waiver of Special Assessment Form
 - 2023 Average Cost = \$3,500



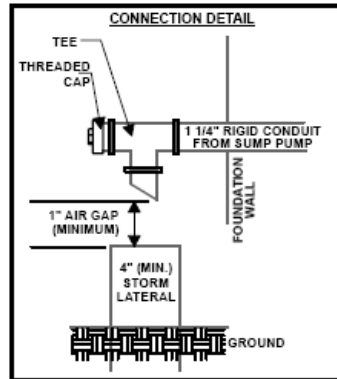
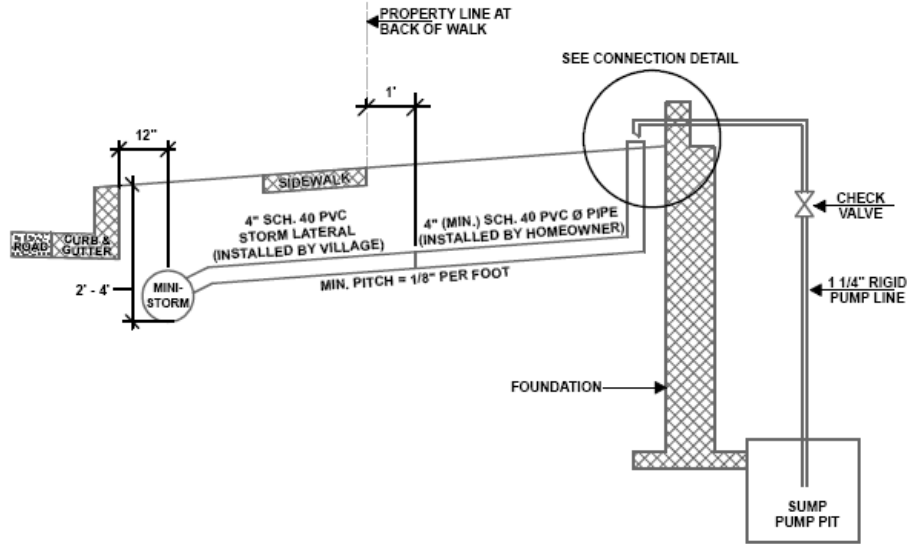
Project Assessments

■ Storm Sewer Lateral

- All homes are required to have a storm lateral to collect sump pump discharge
- Homes not currently connected will be provided a storm sewer lateral which will be stubbed into the property 1' behind the sidewalk
- Homeowner has 90-days to install their private service to the home and connect the sump pump discharge
- Estimated Costs
 - Village Assessment for Stubs = \$1,000±
 - Private Property Connection = \$1,400±

The homeowner can have the private lateral installed as part of the Village contract with cost placed on the assessment roll

Mini-storm Connection



GENERAL COMMENTS

1. EXCAVATE MINI-STORM SEWER LATERAL FIRST TO VERIFY DEPTH PRIOR TO INSTALLING THE LINE TO THE HOME.
2. LATERAL PIPE IS REQUIRED TO BE SCH. 40 (RIGID) RATHER THAN FLEXIBLE.
3. UNDER VILLAGE POLICY, ONCE MINI-STORM SEWER IS INSTALLED, THE PROPERTY OWNER HAS 90 DAYS IN WHICH TO MAKE THE CONNECTION TO THE LATEAL STUB.

Water Services

- Water services are replaced from the main to the curb stop at the cost of the Kimberly Water Department
- Temporary water service will be provided during construction

Project Impacts



- Mailboxes and Mail Delivery
 - Utility contractor will remove mailbox for storage by homeowner
 - A cluster mailbox will be established for mail delivery for the summer
 - Homeowners may use the cluster box or have mail held at the Post Office



- Trash and Recycling collection
 - Normal operation for residents

■ Project Access

■ Utility Construction

- Access to driveways at most times
- Temporary closure of driveway as utility crew installs pipes

■ Street Construction

- Access to driveway at most times until street paving begins
- Paving street ½ at a time
- No access to your driveway for 10-14 days for mainline paving.
No on-street parking at this time
- Access restored when 2nd side is placed
- Driveway access restricted when apron is placed, but on-street parking is available
- Terraces are completed last. Homeowners are encouraged to water grass planting
- Parking Options ➡➡ *Fulcer Street, Paul Drive, Roger Street*



■ Special Needs??... please let us know

Q&A



*Thank you for allowing us
to present today.*

Brad Werner, PE | bwerner@mcmgrp.com

SERVICE INSPIRED SINCE 1909

McMAHON
ENGINEERS \ ARCHITECTS